

30 Birchington Rd



London, England, United Kingdom NW6 4LJ



Martin Wheeler
martin@southhampsteadresidential.co.uk
0207 372 6886
2017-05-08

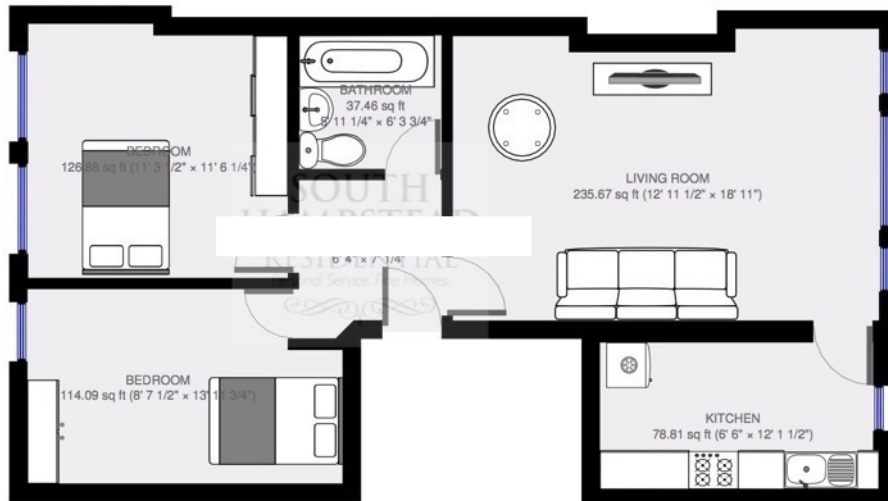
669 sq ft

1 Floor

2 Bedrooms

1 Bathroom

Floor



THIS FLOORPLAN IS PROVIDED WITHOUT WARRANTY OF ANY KIND. South Hampstead Residential DISCLAIMS ANY WARRANTY INCLUDING, WITHOUT LIMITATION, SATISFACTORY QUALITY OR ACCURACY OF DIMENSIONS.